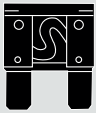


I ACCESSORIES CATALOGUE

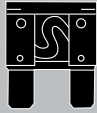
2018



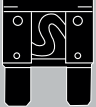
# INDEX

Content		Page
How to use the Catalogue		4
	Parts Listing	5
	<ul style="list-style-type: none"> <li>Battery Accessories                             <ul style="list-style-type: none"> <li>Battery Brass Terminals</li> <li>Booster Cables</li> <li>Battery Testers</li> <li>Hold Downs</li> <li>J Bolts</li> <li>Clamps</li> <li>Crocodile Clamps</li> <li>Lugs</li> </ul> </li> </ul>	6-7
	<ul style="list-style-type: none"> <li>Cable                             <ul style="list-style-type: none"> <li>Multi Core</li> <li>Welding</li> <li>Battery</li> <li>Cable Ties</li> </ul> </li> </ul>	7-11
	<ul style="list-style-type: none"> <li>Circuit Breakers</li> </ul>	12-13
	<ul style="list-style-type: none"> <li>Connectors</li> </ul>	13
	<ul style="list-style-type: none"> <li>First Aid Kit</li> </ul>	13
	<ul style="list-style-type: none"> <li>Flasher Units</li> </ul>	14
	<ul style="list-style-type: none"> <li>Fuses                             <ul style="list-style-type: none"> <li>Fuse Boxes</li> <li>Fusable Links Female</li> <li>Fusable Links Male</li> <li>Fusable Links Bent</li> <li>Blade Fuses</li> <li>Ceramic Fuses</li> <li>Glass Type Fuses</li> <li>Maxi Type Fuses</li> <li>Mini Type Fuses</li> <li>Fuse Strips</li> <li>Fuse Boxes</li> <li>Fuse Holders</li> </ul> </li> </ul>	15-18

# INDEX CONT...

Content		Page
	Parts Listing - continued	
	• Hooters / Horns	18
	• Back-Up / Buzzers	18
	• Inverters	19
	• Junction Boxes	19
	• O Ring Kits	19
	• Plugs & Sockets	19-20
	• Sleeving <ul style="list-style-type: none"> <li>- Heat Shrink</li> <li>- Corrugated Tubing</li> <li>- Empire Sleeving</li> <li>- PVC Sleeving</li> </ul>	20
	• Solder <ul style="list-style-type: none"> <li>- Acid Core</li> <li>- Resin Core</li> </ul>	21
	• Switches <ul style="list-style-type: none"> <li>- Push / Pull</li> <li>- On / Off</li> <li>- On / Off / On</li> <li>- Dimmer</li> <li>- Ignition</li> <li>- Disconnect</li> </ul>	21-29
	• Tape	29

# INDEX CONT...

Content	Page
	
<ul style="list-style-type: none"> <li>Parts Listing - continued</li> </ul>	
<ul style="list-style-type: none"> <li>Terminals <ul style="list-style-type: none"> <li>Ring Terminals</li> <li>Bullet Connectors</li> <li>Female Push On</li> <li>Male Push On</li> <li>Flange Fork</li> <li>Butt Connectors</li> <li>Piggy Back Push On</li> <li>Fully Insulated Push On</li> <li>Terminal Insulator</li> <li>Speaker Terminals</li> <li>Anderson Multi Plugs</li> </ul> </li> </ul>	30-33
<ul style="list-style-type: none"> <li>Testers <ul style="list-style-type: none"> <li>Automotive Rectifier Tester</li> <li>Ignition Module, Distributor and Coil Tester</li> <li>Automotive Regulator Tester</li> <li>Replacement Harness</li> <li>Analog Volt Amp Tester</li> <li>Dual Current Digital Volt Amp Tester</li> <li>DP Regulator Adapter</li> </ul> </li> </ul>	33-34
<ul style="list-style-type: none"> <li>Tools <ul style="list-style-type: none"> <li>Combi Tools</li> </ul> </li> </ul>	35
Brands of Control Instruments Automotive	36
Warranty Policy	37



## HOW TO USE THE CATALOGUE

## 4

Subcategory

## Battery Accessories: Lugs



- Part description

## Specifications

## This image shows a blank sheet of white paper with horizontal ruling lines. The lines are evenly spaced and extend across the width of the page. In the bottom right corner, there is a grey decorative element consisting of a curved shape.

# Parts Listing Automotive Accessories

TAS Automotive offers a range of high quality automotive accessories manufacturer under licensing agreements in Europe, the Americas and Asia, with guaranteed consistent performance to meet South African automotive applications and conditions.

Since 1994, ACSA-MAG has been a strong established brand, known for its product quality on the range of electrical products closely with all manufacturers ensures ongoing availability, service and products at competitive

The ACSA-MAG offers a wide range of automotive accessories Accessories, Terminals and Testers. Each product carries the ACSA-Mag seal of quality, backed by the

Section Content	5 - 35
Parts Listing - Accessories	

Need sub categories

## Parts Listing - Automotive Accessories

### Battery Accessories: Battery Brass Terminals



Part No.	Battery Brass Terminals
SC3	Flat Negative Small Type
SC6	Double Bolt Jiffy Neg.
SC7	Double Bolt Jiffy Pos.
Part No.	Heavy Duty suitable for Bosch
SC9	Double Bolt Jiffy Neg.
SC10	Double Bolt Jiffy Pos.
Part No.	Flat Steel Plate for Securing Cable
SC11	Double Clamp Pos.
SC12	Double Clamp Neg.
Part No.	Battery Brass Terminals
FBT81	Battery Terminal Heavy Duty Negative (-)
FBT82	Battery Terminal Heavy Duty Positive (+)

### Battery Accessories: Booster Cable



Part No.	Booster Cable
9006	250 amp Heavy Duty 4.0 Meter Length 25mm welding cable (blue)

### Battery Accessories: Battery Tester



Part No.	Battery Tester
BT215	6 and 12V Load test (100A) Starter motor test Charging system test

### Battery Accessories: Hold Downs



Part No.	Hold Downs
A2453	Straight
A2454	Square
D5200	Universal. Adjustable in both length & breadth to fit all size batteries. Acid resistant paint.
D5214	Suitable for Toyota Hilux
D5225	Suitable for Toyota Corolla
D6226	Universal with wing nut

### Battery Accessories: J Bolt



Part No.	J Bolt
J-599	1/4" J 6mm
J-600	5/16" J 8mm

### Battery Accessories: Clamps



Part No.	Clamps
BBC600	600 amp Set
BJB600	600 amp Black
BJR600	600 amp Red
BJB120	120 amp Black
BJR120	120 amp Red
BJB60	60 amp Black
BJR60	60 amp Red
BJB40	40 amp Black
BJR40	40 amp Red

## Parts Listing - Automotive Accessories

### Battery Accessories: Crocodile Clamps



Test lead clamps
5 Amp / 10 Amp / 25 Amp / 50 Amp

### Cables: Welding



Part No.	W elding	Rolls
WC16MM	WC16mm <sup>2</sup>	30m
	120 Amp	
	Continuous Current - 100% Duty Cycle	

### Battery Accessories: Lugs



Part No.	Lugs
D4039	60amp/ Heavy Duty, 10mm hole diameter
D4040	100amp/Heavy Duty, 11mm hole diameter
D4078	150amp/Heavy Duty, 14mm hole diameter
SC5	10.5mm hole diameter, crimp type.



Part No.	W elding	Rolls
WC25MM	WC25mm <sup>2</sup>	30m
	160 Amp	
	Continuous Current - 100% Duty Cycle	



### Cables: Multi Core



Part No.	Multi Core (Colour)	Rolls
C4022	2 CORE 0,80 mm <sup>2</sup>	
C5024	2 CORE 1,60 mm <sup>2</sup>	
C5028	3 CORE 0,80 mm <sup>2</sup>	
C5032	3 CORE 1,60 mm <sup>2</sup>	
C5036	5 CORE 0,80 mm <sup>2</sup>	
C5040	5 CORE 1,60 mm <sup>2</sup>	
C5043	7 CORE 0,80 mm <sup>2</sup>	
C5044	7 CORE 1,60 mm <sup>2</sup>	

Need info



Part No.	W elding	Rolls
WC50MM	WC50mm <sup>2</sup>	30m
	255 Amp	
	Continuous Current - 100% Duty Cycle	



## Parts Listing - Automotive Accessories

Cables: (Gauge 1.6mm<sup>2</sup>/15)

[illegible]

Cables: (Gauge 0.80mm<sup>2</sup> /18)



Part No.	Colour	Rolls
C0,80BL	Black	30m
C0,80BR	Brown	
C0,80BU	Blue	
C0,80GR	Green	
C0,80GY	Grey	
C0,80OR	Orange	
C0,80PK	Pink	
C0,80PP	Purple	
C0,80RD	Red	
C0,80WH	White	
C0,80YE	Yellow	

Cables: (Gauge 0.63mm<sup>2</sup> /19)



Part No	Colour	Rolls
C0,63BL	Black	30m
C0,63BR	Brown	
C0,63BU	Blue	
C0,63GR	Green	
C0,63GY	Grey	
C0,63OR	Orange	
C0,63PK	Pink	
C0,63PP	Purple	
C0,63RD	Red	
C0,63WH	White	
C0,63YE	Yellow	



## Cables: (Gauge 1.25mm<sup>2</sup>/16)



Part No.	Colour	Rolls
CI,25BL	Black	30m
CI,25BR	Brown	
CI,25BU	Blue	
CI,25GR	Green	
CI,25GY	Grey	
CI,25OR	Orange	Need info
CI,25PK	Pink	
CI,25PP	Purple	
CI,25RD	Red	
CI,25WH	White	
CI,25YE	Yellow	

## Cables: (Gauge 2.00mm<sup>2</sup> / 14)



Part No.	Colour	Rolls
C2,00BL	Black	30m
C2,00BR	Brown	
C2,00BU	Blue	
C2,00GR	Green	
C2,00GY	Grey	
C2,00OR	Orange	Need info
C2,00PK	Pink	
C2,00PP	Purple	
C2,00RD	Red	
C2,00WH	White	
C2,00YE	Yellow	

## Cables: (Gauge 2.50mm<sup>2</sup> / 13)



Part No.	Colour	Rolls
C2,50BL	Black	30m
C2,50BR	Brown	
C2,50BU	Blue	
C2,50GR	Green	
C2,50GY	Grey	
C2,50OR	Orange	Need info
C2,50PK	Pink	
C2,50PP	Purple	
C2,50RD	Red	
C2,50WH	White	
C2,50YE	Yellow	

## Cables: (Gauge 6.30mm<sup>2</sup> / 9)



Part No.	Colour	Rolls
C6,30BL	Black	30m
C6,30BR	Brown	
C6,30BU	Blue	
C6,30GR	Green	
C6,30GY	Grey	
C6,30OR	Orange	Need info
C6,30PK	Pink	
C6,30PP	Purple	
C6,30RD	Red	
C6,30WH	White	
C6,30YE	Yellow	

Parts Listing -Accessories

Cables: (Gauge 8.00mm² / 8)



Part No.	Colour	Rolls
C8,00BL	Black	30m
C8,00BR	Brown	
C8,00BU	Blue	
C8,00GR	Green	
C8,00GY	Grey	
C8,00OR	Orange	
C8,00PK	Pink	
C8,00PP	Purple	
C8,00RD	Red	
C8,00VH	White	
C8,00YE	Yellow	

Cables: (Gauge 4.00mm² / 10)



Part No	Colour	Rolls
C4,00BL	Black	30m
C4,00BR	Brown	
C4,00BU	Blue	
C4,00GR	Green	
C4,00GY	Grey	
C4,00OR	Orange	
C4,00PK	Pink	
C4,00PP	Purple	
C4,00RD	Red	
C4,00VH	White	
C4,00YE	Yellow	

Cables: (Gauge 3.00mm² / 12)



Part No.	Colour	Rolls
C3,00BL	Black	30m
C3,00BR	Brown	
C3,00BU	Blue	
C3,00GR	Green	
C3,00GY	Grey	
C3,00OR	Orange	
C3,00PK	Pink	
C3,00PP	Purple	
C3,00RD	Red	
C3,00VH	White	
C3,00YE	Yellow	

Cables: Ties



Part No.	Colour	Packs
3100	4 1/2" (114mm)	100
CT4140	6 1/2" (165mm)	
5200	8" (203mm)	
5275	11" (279mm)	
5350	14" (355mm)	
5380	15" (381mm)	



Circuit Breakers:



Part No.	Circuit Breakers
30055-40	Two 10.32 stud terminals with hex nuts and lock washers supplied



Part No.	Circuit Breakers
CB6317	20 Amp Universal



Part No.	Circuit Breakers
30406-25	No cross-wise bracket, breaker only 25 Amp Moulded plastic housing. Remains open on overload until reset button is depressed. Two 10.32 terminals with hex nuts and lock washers supplied



Part No.	Circuit Breakers
CB6318	30 Amp Universal



Part No.	Circuit Breakers
30407-30	30 Amp Moulded plastic housing. Remains open on overload until reset button is depressed. Two 10.32 terminals with hex nuts and lock washers supplied



Part No.	Circuit Breakers
CDM10	10 Amp Weatherproof, Automatic reset



Part No.	Circuit Breakers
30407- 40	40 Amp Moulded plastic housing. Remains open on overload until reset button is depressed. Two 10.32 terminals with hex nuts and lock washers supplied



Part No.	Circuit Breakers
CDM20	20 Amp Weatherproof, Automatic reset



Part No.	Circuit Breakers
CB6377	15 Amp Universal



Part No.	Circuit Breakers
CDM25	25 Amp Weatherproof, Automatic reset

### Circuit Breakers - Continued



Part No.	Circuit Breakers
CDM40	30 Amp
	Weatherproof, Automatic reset



Part No.	Circuit Breakers
CDM40	40 Amp
	Weatherproof, Automatic reset

### Connectors



Part No.	Colour
CN81-01	Plastic female plug single clip type
CN82-01	Plastic female plug single clip type
CN83-01	Housing connector plastic + single
CN84-01	Housing connector plastic - single
CN85-02	Housing connector plastic + 2 way
CN86-02	Housing connector plastic - 2 way
CN87-03	Housing connector plastic + 3 way
CN88-03	Housing connector plastic - 3 way
CN89-04	Housing connector plastic - 4 way
CN90-04	Housing connector plastic - 4 way
CN91-06	Housing connector plastic + 6 way
CN92-06	Housing connector plastic - 6 way
CN93-08	Housing connector plastic + 8 way
CN94-08	Housing connector plastic - 8 way

### First Aid Kit: Fak1



#### Fak1

- 1 x Pair scissors
- 2 x Packs cotton swabs
- 1 x Burnshield burn dressing
- 2 x Resus Aid (CPR mouthpiece)
- 1 x Leaflet ADCO-prolif tablets
- 1 x Plaster roll
- 1 x Pressure bandage
- 1 x 50mm x 75mm bandage
- 2 x 75mm x 100mm bandage
- 1 x Triangular bandage
- 1 x Stretch conform bandage
- 20 x Small self adhesive plasters
- 1 x General purpose bandage 75mm
- 4 x 0.4ml Refresh Eye drops
- 2 x Pair latex rubber gloves
- 1 x Roller bandage
- 1 x Pkt Cotton Buds
- 1 x Eye swab
- 1 x 30g Cetrimide Cream 1%
- 1 x Safety pins set
- 1 x Plastic tweezers
- 2 x Splints
- 1 x Alcohol free cleansing wipes

## Flasher Units



Part No.	Flasher U nits
11-512	12V, 2 Pin Electronic
11-513	12V, 3 Pin Electronic
11-515	24V, 2 Pin Electronic
11-516	24V, 3 Pin Electronic



Part No.	HD-13/22/23 "T RIDON" Brand
HD13	12V, 3 Pin
HD23	24V, 3 Pin

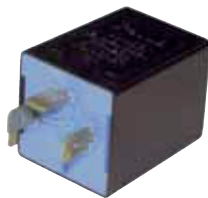


To flash two-four 32 C.P. Lamps

Part No.	Flasher U nits
550	12V, 2 Pin
552	12V, 3 Pin



Part No.	Flasher U nits
FU24V	24V As 550 only 24V 3 Pin



Part No.	Flasher U nits
FU123	German 12V 2/4 X 21(23) W Suitable for European vehicles
FU213	Japan 12V 2/4 X 21(23) W Suitable for Japanese vehicles



Part No.	Flasher U nits
HD12	12V 2 Pin
HD22	24V, 2 Pin

Parts Listing - Automotive Accessories

Fuses: Fuse Box



Part No.	Fuse Box	Package Per Box
SF2030	30 Amp	
SF2040	40 Amp	
SF2050	50 Amp	
SF2060	60 Amp	
SF2070	70 Amp	Need info
SF2080	80 Amp	
SF2100	100 Amp	

Fuses: Fuseable Link Bent



Part No.	Fuseable Link Bent	Package Per Box
VS2030	30 Amp, Pink	
VS2040	40 Amp, Green	
VS2050	50 Amp, Red	
VS2060	60 Amp, Yellow	
VS2080	80 Amp, Black	Need info
VS2100	100 Amp, Blue	
FLW125	Fuseable Link Wire	
	35 Amp black wire	

Fuses: Fuseable Links Female



Part No.	Fuseable Links Female	Package Per Box
VS1068	30 Amp, Pink	
VS1060	40 Amp, Green	
VS1067	60 Amp, Yellow	
VS1066	80 Amp, Black	
VS1059	100 Amp, Blue	Need info
SF2080	80 Amp,	
SF2100	100 Amp	

Fuses: Blade Fuses



Part No.	Blade Fuses	Package Per Box
I003	3 Amp, Violet	100
I005	5 Amp, Light Brown	
I007	7 Amp, Dark Brown	
I010	10 Amp, Red	
I015	15 Amp, Blue	Need info
I020	20 Amp, Yellow	
I025	25 Amp, White	
I030	30 Amp, Green	

Fuses: Fuseable Links Female



Part No.	Fuseable Links Female	Package Per Box
VS1064	30 Amp, Pink	
VS1073	30 Amp, Pink Mini Type	
VS1063	40 Amp, Green	
VS1074	40 Amp, Green Mini Type	Need info
VS1061	50 Amp, Red	
VS1065	60 Amp, Yellow	
VS1062	80 Amp, Black	

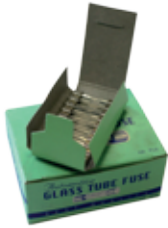
Fuses: Ceramic Fuses



Part No.	Blade Fuses	Package Per Box
22505	5 Amp, Yellow	100
22508	5 Amp, White	
22516	7 Amp, Red	
22525	10 Amp, Blue	
		Need info

## Parts Listing - Automotive Accessories

### Fuses: Glass Type Fuses 32mm



Part No.	Glass Type Fuses 32mm	Package Per Box
I3205	5 Amp	100
I3210	10 Amp	
I3215	15 Amp	
I3220	20 Amp	
I3225	25 Amp	
I3230	30 Amp	

Need info

### Fuses: Strips



Part No.	Glass Type Fuses 32mm	Package Per Box
SF2030	30 Amp, Green	100
SF2040	40 Amp, Orange	
SF2050	50 Amp, Red	
SF2060	60 Amp, Blue	
SF2070	70 Amp, L/Brown	
SF2080	80 Amp, White	
SF2100	100 Amp, Violet	

Need info

### Fuses: Maxi Type



Part No.	Maxi Type	Package Per Box
0930	30 Amp, Green	
0940	40 Amp, Orange	
0950	50 Amp, Red	
0960	60 Amp, Blue	
0980	80 Amp, White	

Need info

### Fuses: Fuse Box



Part No.	Fuse Box	Package Per Box
35240000	4 Plug	
35260000	6 Plug	
35280000	8 Plug	
35320000	12 Plug	

Need info

### Fuses: Mini Type



Part No.	Mini Type	Package Per Box
0005	5 Amp, Orange	25
0007	7 Amp, Brown	
0010	10 Amp, Red	
0015	15 Amp, L/Blue	
0020	20 Amp, Yellow	
0025	25 Amp, Clear	
0030	30 Amp, Green	

Need info

### Fuses: Fuse Kit



Part No.	Fuse Kit	Package Per Box
FB120	Blade Fuse Kit	
FBS120	Mini Fuse Kit	

Need info

## Parts Listing - Automotive Accessories

### Fuses: Fuse Box



Part No.	Fuse Box	Package Per Box
FH1600	16 Way	
	Suitable for VW	

Need info



Part No.	Fuse Box	Package Per Box
M643-01	8 Way Glass Heavy Duty	
	Suitable for Caterpillar	

Need info



Part No.	Fuse Box	Package Per Box
SW224	4 Way side entry	
SW226	6 Way side entry	

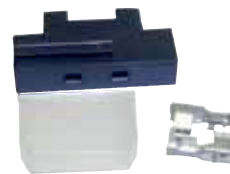
Need info

### Fuses: Fuse Holder



Part No.	Fuse Holder	Package Per Box
36010800	For ceramic fuses	
	Suitable for Bosch	
	Uses: 22505	
	22508	
	22516	
	22525	

Need info



Part No.	Fuse Holder	Package Per Box
FH1	Blade fuse (standard type)	
	Uses: 1003	
	1005	
	1007	
	1010	
	1015	
	1020	
	1025	
	1030	

Need info



Part No.	Fuse Holder	Package Per Box
FH100	Blade fuse	
	Uses: 1003 - 1030	
FH102	Water proof blade fuse (Mini)	
	Uses: 0005 - 0030	
FH104	Fuse holder Maxi	
	Uses: 0930 - 0980	

Need info



Part No.	Fuse Holder	Package Per Box
FH400	4 Way	
FH600	6 Way	
FH800	8 Way side entry blade fuse (standard type)	

Need info

Parts Listing - Automotive Accessories

Fuses: Fuse Holder - Continued



Part No.	Fuse Holder	Package Per Box
FH6348	For glass fuses	

Need info

Hooters / Horns



Part No.	Hooters / Horns
GPI - 12V	Hooter air 12V single



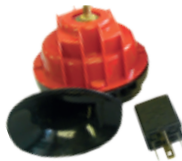
Part No.	Hooters / Horns
GP2-12V/24V	Two tuned notes. Composed by one electric air compressor and two straight horns made in resin. For installation on motor vehicles. Voltages: DC 12/24 Volts



Part No.	Hooters / Horns
HPTI	Hooter contact pins



Part No.	Hooters / Horns
M1900	Hooter single 12V
M2100	Hooter single 24V



Part No.	Hooters / Horns
TM90S	12V Hooter single



Part No.	Hooters / Horns
TM90T	12V Hooter single

Back-Up / Buzzers



Part No.	Back- Up / Buzzers
210330	12 to 48VDC 87dB
210331	12 to 48VDC 97dB
210333	12 to 48VDC 107dB
210335	12 to 48VDC 112dB
210365	12 to 48VDC 112dB (Double Tone)



Part No.	Back- Up / Buzzers
BZ24 24V	
	Need info



## Parts Listing - Automotive Accessories

### Inverters



Part No.	Inverters
INV600W	Fully automatic DC - AC inverters, can be used for boats, cars, outdoor activities etc.
INV1000W	Fully automatic DC - AC inverters, can be used for boats, cars, outdoor activities etc.
INV1500W	Fully automatic DC - AC inverters, can be used for boats, cars, outdoor activities etc.

### “O” Ring Kits



Part No.	Inverters
ORK-M400	Metric, 400 pieces



Part No.	Inverters
ORK-IP400	Imperial, 400 pieces

### Junction Boxes



Part No.	Inverters
BE4	14 Way



Part No.	Inverters
TL3540.00	8Way screw connection rubber body 15 Amp rating

### Plug & Sockets



Part No.	L amp Socket
TLI4201.00	Single pole, 240W Max. at 24V D.C. Aluminium socket with screw terminals fitted with thermoplastic lid



Part No.	Plug
TLI4200.00	Single pole, 240W Max. @ 24V D.C. Thermoplastic plug with 2 scwew terminals



## Parts Listing - Automotive Accessories

### Plug & Sockets - Continued



Part No.	Sockets
TC7S	7 Pin 12V



Part No.	Plug
TC7P	7 Pin 12V



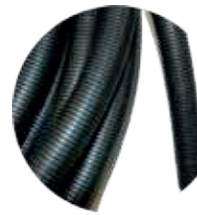
Part No.	Cigarette Socket	Lighter Plug & Socket
CL113		Universal cigarette lighter

### Sleeving: Heatshrink



Part No.	Heatshrink
HSA8000	Pack of 12 assorted I.D.'s 100mm lengths

### Sleeving: Corrugated Tubing



Part No.	Corrugated T ubing
CT10MM	25M Slit roll
CT14MM	25M Slit roll
CT18MM	25M Slit roll
CT20MM	25M Slit roll
CT25MM	25M Slit roll
CT30MM	25M Slit roll

### Sleeving: Empire Sleeving



Part No.	Empire Sleeving
ES1MM	1 meter lengths
ES2MM	1 meter lengths
ES3MM	1 meter lengths
ES4MM	1 meter lengths
ES5MM	1 meter lengths
ES6MM	1 meter lengths

### Sleeving: PVC Sleeving



Part No.	PV C Sleeving
	Sold in 25M lengths per roll
	4mm, 5mm, 6mm, 8mm, 10mm, 12mm, 14mm, 16mm, 18mm, 20mm, 22mm, 25mm

Need info

## Parts Listing - Automotive Accessories

### Solder: Acid Core



Part No.	Acid Core
AC250	Solder Acid Core
AC500	



Part No.	Isolator Switch
SW100	Isolator Switch - 2 pole

### Switches: Resin Core



Part No.	Resin Core
RC250	Solder Resin Core
RC500	



Part No.	Isolator Switch
SW103	Heavy Duty
	250 Amp
	Continuous @ 24V



Part No.	Solder Stick
SS23	Sold in 5 Sticks = 1Kg

### Switches: On/Off



Part No.	Toggle
TL14109	2 position: On/Off
	2 Blade, Single pole. Current resistive load
	10 A - 12V, 10A - 24V

### Switches: Push/Pull



Part No.	Isolator Switch
290000	Isolator Switch - 2 pole



Part No.	Toggle
5582	2 Position: Off/On
	2 screw terminals
	S.P.S.T.

Switches: On/Off



Part No.	T oggle
551800	Heavy Duty
	2 position: On/Off S.P.S.T.
	2 Screw terminals
	Contacts copper & bronze



Part No.	T oggle
SW615	Micro Switch
	On/Off



Part No.	T oggle
551840	Extra Heavy Duty
	2 positions: On/Off S.P.S.T.
	2 screw terminals
	Contacts silver plated



Part No.	T oggle
SW894B	25 Amp Silver contacts
	2 position : On/Off
	LED Blue light



Part No.	T oggle
E47	2 position On/Off
	Reversible 2 step spacing collar allows switch to fit various thicknesses of metal, wood or plastic panels. Rating: 10 Amps at 12V. Most popular.



Part No.	T oggle
SW894G	25 Amp Silver contacts
	2 position: On/Off
	LED Green light



Part No.	T oggle
SW610	Heavy Duty
	2 position: On/Off
	2 screw 25 Amp



Part No.	T oggle
SW894R	25 Amp Silver contacts
	2 position: On/Off
	LED Red light

Parts Listing - Automotive Accessories

Switches - On/Off - Continued



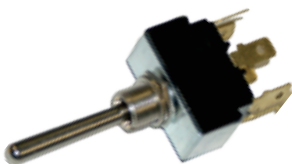
Part No.	T oggle
SW694	2 position: On/Off
	Red LED



Part No.	T oggle
55054	Double pole, double throw
	Mom 3 position:
	Mom On/Off/Mom Entary/On
	Spring return to OFF pos. 6 screw
	terminals



Part No.	Rocker
SW655	2 position: On/Off
	2 blade
	Red LED



Part No.	T oggle
55057	3 position: On/Off/On D.P.D.T.
	6 quick connect male blade terminals.
	replaces IH 362392C91. Long handle
	1 1/2" (38.10mm)



Part No.	T oggle
SW611	Heavy Duty
	3 position: On/Off/On
	3 screw 25 Amp

Switches: On/Off/On



Part No.	T oggle
5592	Double pole, double throw
	3 position : On/Off/On
	6 screw terminals

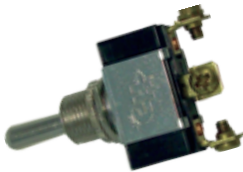


Part No.	T oggle
551842	Extra Heavy Duty
	3 position: On/Off/On
	3 screw terminals
	S.P.D.T.

Switches: On/Off/On



Part No.	T oggle
42210100	3 Way On/Off/On
	6 terminals
	screw type



Part No.	T oggle
5586	3 Position: On/Off/On
	3 Screw terminals, S.P.D.T.



Part No.	T oggle
SW853	3 Position: On/Off/On
	Momentary

Switches: Dimmer



Part No.	Push Button
9245	Extra Heavy Duty
	Silver contacts, 2 screw terminals.
	Mounting stem 5/8"-32" thread, length 21/32" Protective cap snaps on



Part No.	Rocker
SW653	Green 12V 20Amp
	Illuminated 3 blade
	Grnd/Acc/Pwr



Part No.	Push Button
90030	Momentary
	2 positions: Off/On, S.P.S.T.
	Silver contacts, 2 screw terminals, mounting stem 5/8" dia., length 21/32". Fits panel 7-32" thick



Part No.	T oggle
551849	Extra Heavy Duty
	3 Position: Off/Park & Tail/Head & Tail
	4 Screw terminals for headlamp switch



Part No.	Starter Button
STB115	2 position
	2 screw terminals with protective boot

## Parts Listing - Automotive Accessories

### Switches: Dimmer - Continued



Part No.	Dimmer/Dip
7769	Heavy Duty 3 screw Suitable for Caterpillar



Part No.	Dimmer
DS120	4 (Slip) terminal type. 2 hole mounting. Suitable for Volkswagen.



Part No.	Dimmer
DS101	Universal 3 terminal type. Die cast, waterproof, 3 hole mounting Suitable for Chev, Trucks



Part No.	Dimmer
7700	Splash and moisture proof Three 1/4" - 20 tapped holes



Part No.	Dimmer
DS112	3 (Slip) terminal type. Die cast, waterproof, 2 hole mounting Suitable for Valiant, foot operated



Part No.	T oggle Boot
81264/81256	Fits 5586 / 5582 / 551840 / 551842



Part No.	Dimmer
DS115	3 (Slip) Terminal type. Die cast, waterproof, 2 hole mounting Suitable for Chev, later models.



Part No.	T oggle Switch Cover
TL14119	Fits 5586 / 5582 / 551840 / 551842

## Switches: Dimmer - Continued



Part No.	Starter Button
STB6032	Normally Off, Momentarily On
	2 Screw Terminals
	Mounting Stem
	5/8" diameter, 5/8" length



Part No.	Ignition
34228R	Suitable for Massey Ferguson
	6 blade terminals

## Switches: Ignition



Part No.	Ignition
KS300	Universal diesel type with 2 keys.
	4 Positions: On/Off/On/Start
	4 terminals screw type



Part No.	Ignition
95612	3 position: OFF-IGN/IGN/START
	"O" Ring sealed for weatherproofing
	Silver inlaid contacts, 3 screw terminals.
	Mounting bushing 5/8" diam. 7/16" long



Part No.	Ignition
9578	3 position: ACC/OFF/IGN-ACC
	3 Screw terminals



Part No.	Ignition
95525-A	4 position: ACC/OFF/IGN-ACC/IGN-START
	Mounting stem: 15.9mm - 11mm long
	4 screw terminals



Part No.	Ignition
9579	4 position: ACC/OFF/IGN-ACC/IGN-START
	Mounting hole, 19mm-20.6mm
	4 screw terminals



Part No.	Ignition
95535	4 position: ACC/OFF/IGN-ACC/IGN-START
	Mounting stem: 20.6mm - 22.2mm long
	4 screw terminals

## Parts Listing - Automotive Accessories

### Switches: Ignition - Continued



Part No.	Ignition
KS100	With 2 keys 6V - 12V 4 positions:ACC/OFF/IGN/START 4 terminals screw type. Mounting stem 3/4"
	Suitable for Mitsubishi, Toyota



Part No.	Ignition
KS133	Suitable for Isuzu KB20 Petrol



Part No.	Ignition
KS101	With 2 keys 6V - 12V 4 positions:ACC/OFF/IGN/START 4 terminals screw type. Mounting stem 25mm
	Suitable for Toyota. 221127-5201 ISC-4R



Part No.	Ignition
KS200	4 Blade terminals



Part No.	Ignition
KS120	Suitable for Toyota (ISC4)



Part No.	Ignition
KS500	5 terminal, Suits Bosch



Part No.	Ignition
KS132	Suitable for Mazda B1600



Part No.	Ignition
KS6040	Universal, two flush screw terminals, single throw Key removable in "On" Or "Off" Pos. Mounting shaft 7/8" long, 3/4" diameter



Switches: Ignition - Continued



Part No.	Ignition Diesel
95033	3 Position: GLOW/OFF/GLOW-START
	3 Screw terminals



Part No.	Indicator Steering Column Switch
43790100	3 pin, Column mount



Part No.	Steering Column Switch
TSS509	Mercedes ACTROS



Part No.	Switch
I8110100	Mechanical Stop light



Part No.	Indicator Switch
TSS911	Straight Arm



Part No.	Rocker
SW697	Window / Aerial - 5 blade



Part No.	Indicator Switch
TSS224	Bent Arm



Part No.	Hazard Switch
HSW100	

Need info

## Parts Listing - Automotive Accessories

### Switches: Ignition - Continued



Part No.	Starter Button
I3300100	
	Need info



Part No.	Switch Lock
24505	
	Need info

### Switches: Disconnect



Part No.	Disconnect Switch
75904-02	6V - 36V Sfety master disconnect Disconnects battery circuit & alternator / generator field circuit. D.P.S.T., key operated



Part No.	Disconnect Switch
2484A	24V - 36V Universal Battery Disconnect / Selector Disconnects battery circuit ONLY. Two 3/8" brass stud terminals. Brass mounting stem diam. 3/4" length 25/32" overall diam. 2 5/8", length 4 1/8" Silver laminated contacts

### Tape



Part No.	PV C T ape
PVC1S	Million 10M
PVC2L	Million 20M

Terminals: Ring Terminals



Part No.	Ring Terminals	Package Per Box
IT556	Wire Range: 0.25 - 1.65 mm <sup>2</sup> Stud Size: 3.2mm ø	50
IT535	Wire Range: 0.25 - 1.65 mm <sup>2</sup> Stud Size: 4.3mm ø	
IT557	Wire Range: 0.25 - 1.65 mm <sup>2</sup> Stud Size: 5.3mm ø	

Need info

Part No.	Ring Terminals	Package Per Box
IT539	Stud Size: 5.3mm ø Wire Range: 2.63 - 6.64 mm <sup>2</sup>	50
	Stud Size: 6.4mm ø	
IT563	Wire Range: 2.63 - 6.64 mm <sup>2</sup> Stud Size: 8.4mm ø	
IT554	Wire Range: 2.63 - 6.64 mm <sup>2</sup> Stud Size: 10.5mm ø	
ITM13	Wire Range: 2.63 - 6.64 mm <sup>2</sup> Stud Size: 13mm ø	

Need info



Part No.	Ring Terminals	Package Per Box
IT558	Wire Range: 1.04 - 2.63 mm <sup>2</sup> Stud Size: 3.2mm ø	50
IT536	Wire Range: 1.04 - 2.63 mm <sup>2</sup> Stud Size: 4.3mm ø	
IT537	Wire Range: 1.04 - 2.63 mm <sup>2</sup> Stud Size: 5.3mm ø	
IT560	Wire Range: 1.04 - 2.63 mm <sup>2</sup> Stud Size: 6.4mm ø	

Need info

Terminals: Bullet Connectors



50 per box

Part No.	Bullet Connectors	Package Per Box
IT547	Wire Range: 0.25 - 1.65 mm <sup>2</sup> Bullet Width: 4mm	50
IT550	Wire Range: 1.04 - 2.63 mm <sup>2</sup> Bullet Width: 4mm	
IT850	Wire Range: 2.63 - 6.64 mm <sup>2</sup> Bullet Width: 4mm	

Need info

## Parts Listing - Automotive Accessories

### Terminals: Bullet Connectors



Part No.	Bullet Connectors	Package Per Box
IT548	Wire Range: 0.25 - 1.65 mm <sup>2</sup> Bullet Width: 4mm	50
IT549	Wire Range: 1.04 - 2.63 mm <sup>2</sup> Bullet Width: 4mm	
IT849	Wire Range: 2.63 - 6.64 mm <sup>2</sup> Bullet Width: 4mm	

Need info



Part No.	Female Push On	Package Per Box
IT543	Wire Range: 3 - 6.35 mm <sup>2</sup> Width: 6.7mm	50
IT555	Wire Range: 3 - 6.35 mm <sup>2</sup> Width: 10mm	

Need info

### Terminals: Female Push On



Part No.	Female Push On	Package Per Box
IT741	Wire Range: 0.25 - 1.25 mm <sup>2</sup> Width: 5.1mm	50
IT541	Wire Range: 0.25 - 1.25 mm <sup>2</sup> Width: 6.6mm	

Need info



Part No.	Female Push On	Package Per Box
IT742	Wire Range: 1.50 - 2.50 mm <sup>2</sup> Width: 2.4mm	50
IT542	Wire Range: 1.50 - 2.50 mm <sup>2</sup> Width: 6.5mm	
IT544	Wire Range: 1.50 - 2.50 mm <sup>2</sup> Width: 8mm	

Need info

### Terminals: Male Push On



Part No.	Male Push On	Package Per Box
IT540	Wire Range: 0.50 - 1.25 mm <sup>2</sup> Width: 6.3mm	50



Part No.	Male Push On	Package Per Box
IT740	Wire Range: 1.50 - 2.50 mm <sup>2</sup> Width: 6.3mm	50

## Terminals: Flange Fork



Part No.	Flange Fork	Package Per Box
IT552	Wire Range: 1.50 - 2.50 mm Width: 4.4mm	50



Part No.	Flange Fork	Package Per Box
IT553	Wire Range: 1.50 - 2.50 mm Width: 5.4mm	50

## Terminals: Piggy Back Push On

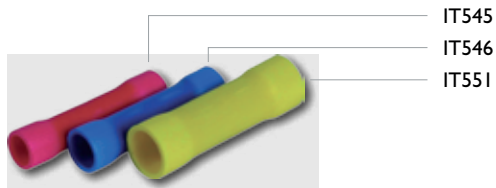


Part No.	Piggy Back Push On	Package Per Box
IT561	Wire Range: 0.50 - 1.25 mm Width: 6.8mm	50



Part No.	Piggy Back Push On	Package Per Box
IT562	Wire Range: 1.50 - 2.50 mm Width: 6.6mm	50

## Terminals: Butt Connectors



Part No.	Butt Connectors	Package Per Box
IT545	Wire Range: 0.50 - 1.25 mm Width: 1.5mm	50
IT546	Wire Range: 1.50 - 2.50 mm Width: 2.4mm	
IT551	Wire Range: 3.00 - 6.35 mm Width: 3.3mm	

Need info

## Terminals: Fully Insulated Push On



Part No.	Fully Insulated Push On	Package Per Box
IT1541	Wire Range: 0.50 - 1.25 mm Width: 6.6mm	50
IT1542	Wire Range: 1.50 - 2.50 mm Width: 7mm	

Need info

## Parts Listing - Automotive Accessories

### Terminals: Insulator



Part No.	Insulator	Package Per Box
HI135	L = 25mm, W = 8mm	50



Part No.	Anderson Multi Plugs	Package Per Box
AND350	350 Amp	50

### Terminals: Speaker Terminals



Part No.	Piggy Back Push On	Package Per Box
IT559	Wire Range: 1.50 - 2.50 mm Width: 3.2mm	50

### Terminals: Anderson Multi Plugs



Part No.	Anderson Multi Plugs	Package Per Box
ATK150	Box of assorted insulated terminals	50

### Terminals: Anderson Multi Plugs - For Battery /Truck Chargers



50 per box

Part No.	Anderson Multi Plugs
AND50	50 Amp
AND175	175 Amp

### Testers: Automotive Rectifier Tester



Part No.	Automotive Rectifier Tester
RCT208	A quick and easy way to test rectifier diodes in all types of alternators. Each diode is tested for short circuits, open circuits, forward conduction and reverse blocking. The condition of the rectifier is indicated by LEDs. It takes less than ten seconds for a complete test.

## Testers: Ignition Module, Distributor & Coil Tester



Part No.	Ignition Module, Distributor & Coil Tester
XTE500 (12V) XTE500 -220V	This tester is indispensable for fault finding in distributor (DIS) electronic ignition systems. Tests both Hall effect and Magnetic type modules for correct timing pulses to the ECU & checks the coil current across the RPM range. Can verify the performance of conventional/multi coil packs. Also tests crank & cam sensors.

## Testers: Automotive Regulator Tester



Part No.	Automotive Regulator Tester
XTE500 (12V) XTE500 -220V	This tester automatically tests 12V and 24V regulators for pass or fail and accurately displays the regulating voltage.
	It tests in a dynamic mode i.e. the regulator is constantly switching on and off when under test. Useful for voltage regulator manufacturers, auto-electricians and warranty departments.

## Testers: Replacement Harness



Part No.	Replacement Harness
HNS100	Ignition Module, Distributor & Coil Tester

## Testers: Analog Volt Amp Tester



Part No.	Analog Volt Amp Tester
VAT280	Current 1: -150 to +150 DC
	Current 2: -1A to +1A DC
	In increments of 1mA
	Voltage: -99 to +99Vdc
	High accuracy to end of battery life. Very low current consumption.

## Testers: Dual Current Digital Volt Amp Tester



Part No.	Dual Current Digital Volt Amp Tester
VAT278	Current: 0-100aDC
	Voltage: 0-50Vdc
	Precision moving coil meters
	Rugged metal case

## Testers: DP Regulator Adapter



Part No.	DP Regulator Adapter
TA277	DP type regulators get their drive signal from the ECU. Ordinary testers will damage the DP type regulator.
	This adapter when used with the Terastra 279 Regulator tester will easily test D-P type regulators. Also provides AC Stator signal to test - active LAMP function. Model 277

## Parts Listing - Automotive Accessories

### Tools: Combitools



Part No.	Pulley Combitoool
CO-28580-1	Suits Bosch, long shaft and RotoRx decoupler pulleys. Shaft 114mm



Part No.	Pulley Combitoool
CO-28580-3	Suits Valeo



Part No.	Pulley Combitoool
CO-28580-2	Suits Denso types. Application Volvo



Part No.	Pulley Combitoool
CO-28580-4	Suits Renault - for assembly of rubber clutch pulley



Part No.	Pulley Combitoool
CO-28580-3	Suits Valeo



Part No.	Pulley Combitoool
CO-28580-5	Suits Bosch / Valeo. Shaft 74mm



## BRANDS OF TAS AUTOMOTIVE



GABRIEL manufactures a comprehensive range of dampers that are designed and engineered to suit the conditions of South African roads. These are available in shock absorbers, spring seat shocks, struts, strut cartridges and steering dampers. Gabriel also manufactures gas springs that ease the opening and closing of car boots, bonnets, hatches, hatchback windows and canopies. Gabriel supplies kits and accessories for shocks and struts.



VDO is a global brand providing state of the art automotive electronic and mechatronic solutions capturing the automotive future. The extensive range of VDO quality products covers the automotive, marine, commercial, industrial and specialised OEM market. The brand is associated with only the highest quality, and embodies the principles of individual mobility, driving pleasure, safety, environmental responsibility and cost efficiency.



ECHLIN is acknowledged as a premium brand in the ignition, fuel, cooling and switch category. For nearly 60 years Echlin has remained at the forefront of product range development, boasting the widest range of radiator caps, oil filler caps, locking caps, ignition products, water pumps, fuel pumps, carburettor kits, thermostats and switches in the South African automotive aftermarket. Echlin is the industry reference in range and quality.



AUTOCOM has been recognised as a leading brand in the suspension and steering market since 1978, and continues to remain at the forefront of the suspension market through technical agreements with global OEM manufacturers. Autocom suspension and steering components are manufactured from only the highest quality material to ensure that these safety critical parts conform to internationally recognised OEM quality standards.



ACSA-MAG is one of South Africa's leading brand of auto electrical products which includes starters, alternators and rotational parts such as solenoids, bendix drives, armatures, regulators and rectifiers. The brand is also associated with a wide range of quality auto electrical accessories, including brackets, cables, sleeves, fuses, cable ties, plugs, sockets, tape and terminals. ACSA-MAG prides itself on quality and range availability.



MAG BRAKES, a true South African brand in the heavy-duty airbrake market, is widely acclaimed for its supply of quality airbrake parts and hydraulic cylinders to the brake industry. Mag Brakes is not only recognised for their extensive range of airbrake, brass and steel fittings, adaptors and comprehensive range of grease nipples, but also for their design and installation of ABS, EBS and hydraulic brake kits for trucks and trailers to SABS specification.



SHURLOK is a leading South African brand in the vehicle security market with over 20 years experience in developing, manufacturing and providing vehicle security solutions to both the OEM and aftermarket industry. The extensive product range covers a comprehensive array of vehicle immobilisers and alarms, feature rich central locking systems with remote control and keyless entry capabilities, manufactured to VESA certification.



WARN, with more than 60 years of research, development and manufacturing experience, is undoubtedly the premium global winch brand. Manufactured for extreme performance, WARN provides a range of winches for automotive, industrial, commercial and recreational needs as well as a full range of off-road accessories. The company's commitment to engineering excellence can be seen in the products' quality, durability and innovation.



HI-LIFT jacks are just about the most versatile piece of off-road equipment you can buy. It doesn't matter if you are in the Namib desert, the African jungle, or the Bushveld, Hi-Lift jacks are designed to help you survive the most demanding situation. Manufactured to the most exacting standards, with only the highest quality material to withstand the demands of these conditions, it will never let you down.



EUROCABLE has more than 35 years experience in the design, development and manufacturing of ignition leads, and is a global brand in the automotive spare parts market. It continues to offer the widest range for the aftermarket whilst developing and manufacturing tailor made ignition leads for industrial engines. Eurocable ensure that OEM standards are always met through the provision of ISO 9001 and TS16949 manufacturing standards.



CONTITECH, a brand of Continental Corporation, is a leader in the power transmission market, manufacturing everything from power transmission belts and matched components right through to complete belt drive systems. Quality and innovation have ensured that the Contitech range of products deliver proven performance in the automotive industry, and ensure that the brand continues to live up to its motto "Our Drive – Your Success"



TRUCK-LITE has been providing visibility systems since 1955 and continues to remain a leading global brand in the truck and trailer market. It has always been at the forefront of innovation: from the era of bulb replaceable metal lights to sealed and shock resistant poly carbonate lights, from bulbs to light emitting diodes. Truck-Lite continues to innovate and provide quality products "from the front of the truck to the rear of the trailer."

## HEAD OFFICE

JOHANNESBURRANDBURG

TIME ACCESS AND AUTOMOTIVE SYSTEMS

23 STEVENS ROAD, BLAIRGOWRIE, RANDBURG

South Africa

Tel: +27(0)11 326 4146

Cell +27(0)82 375 3280

Fax: +27(0)11 781 4392

[adriang@lantic.net](mailto:adriang@lantic.net)

[www.t-a-s.co.za](http://www.t-a-s.co.za)

[www.timeandautomotive.co.za](http://www.timeandautomotive.co.za)

